

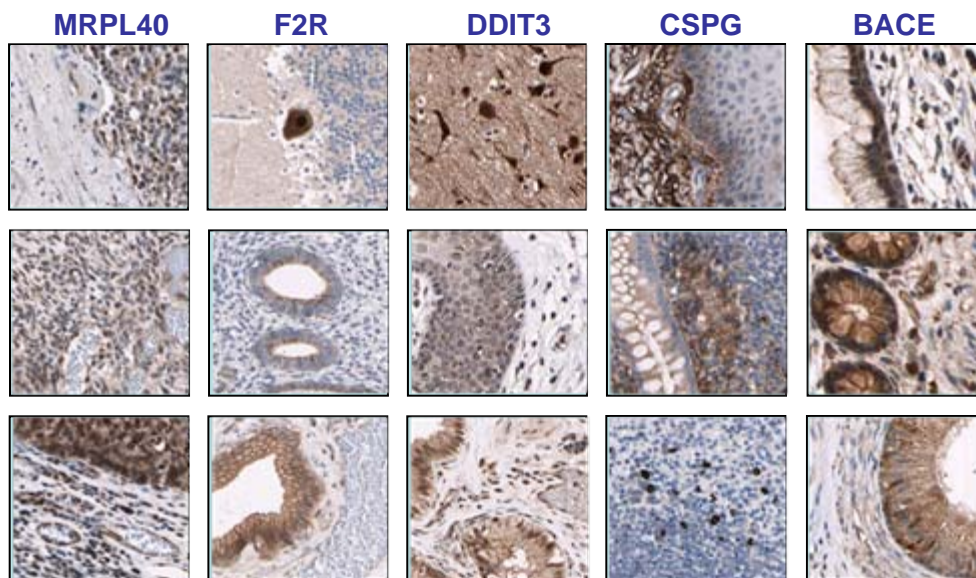


Genomic Antibody Technology™

Application Note

IMMUNOCHEMISTRY OF GENOMIC ANTIBODY TECHNOLOGY™- DERIVED REAGENTS ON CLINICAL SAMPLES IN COOPERATION WITH THE HUMAN PROTEIN ATLAS

Affinity purified polyclonal antibodies produced by Genomic Antibody Technology™ in rabbits were studied in the HPA's tissue-profiling program that generated high-resolution immunohistochemistry images representing a wide spectrum of normal tissues and cancer types. For each antibody, 576 spots of human tissue from 360 different individuals were immunostained and manually annotated. A selection of images from five protein targets is seen below.



Brown color indicates presence of protein, blue color shows cell nuclei.



Images created in the analysis clearly demonstrated differential staining of cancer associated proteins in patient biopsy samples.